

FOOD COURT

SPACE	SF	TENANT
1142	1225	CINNABON
1154	2669	SBARRO
1401	569	STEAK ESCAPE
1402	541	TACO BELL
1403	453	THE LOVING HUT EXPRESS
1404	429	GOLD STAR CHILI
1405	507	CHINA MAX
1406	513	SUBWAY
1407	506	
1408	689	
1409	652	CAJUN CAFE
1410	618	SAXBY'S

Dayton Mall

Dayton, Ohio

GLIMCHER DEVELOPMENT CORPORATION
 GIMCHER PROPERTIES LIMITED PARTNERSHIP
 180 East Broad Street, 21st Floor
 Columbus, OH 43215
 Phone: 614.621.9000
 Fax: 614.621.9321

Revisions

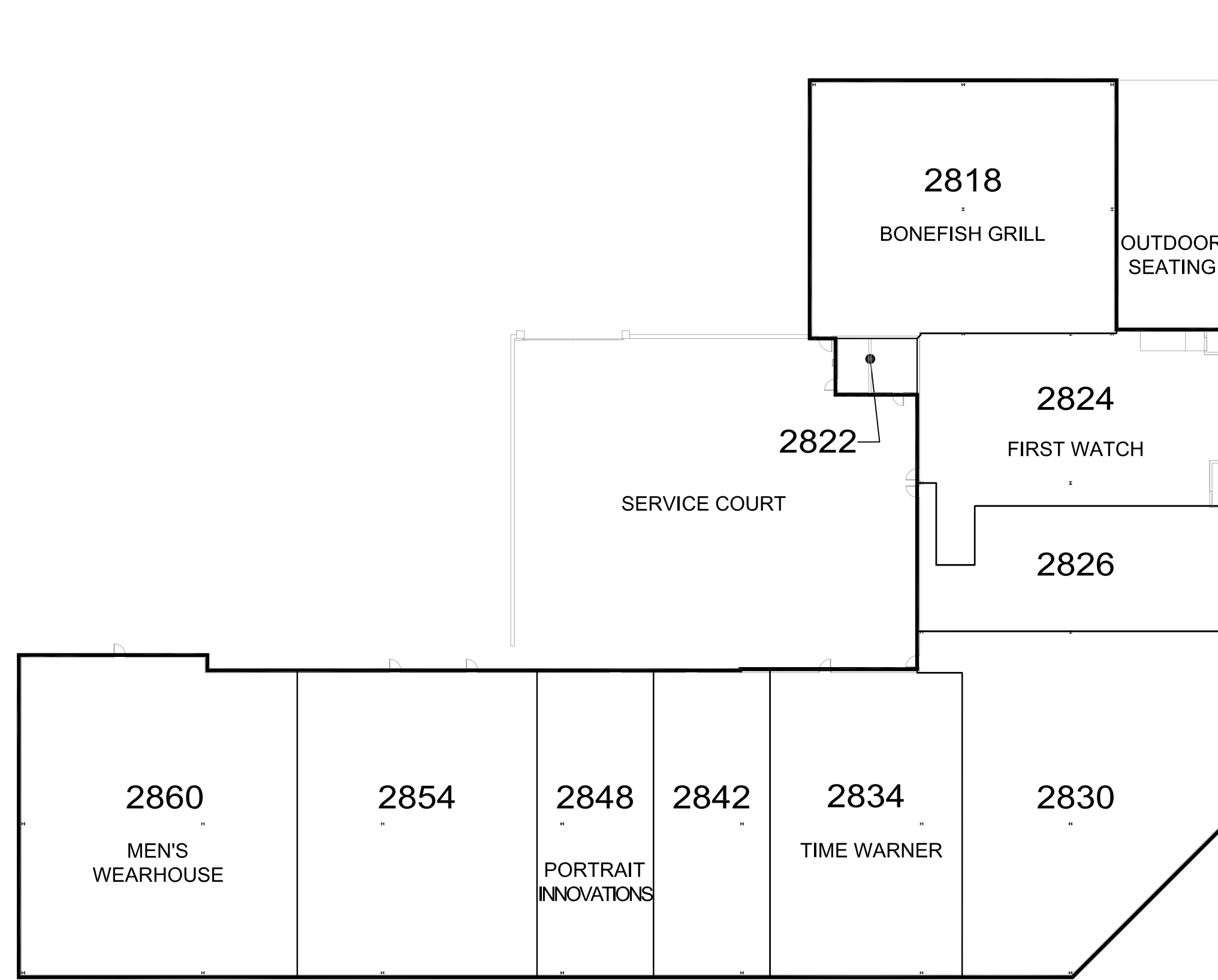
No.	Date
1	

- GROSS LEASABLE AREA:
 Mall Shop GLA:
- Anchors:
 1) BORDERS
 2) DSW SHOE
 3) ELDER-BEERMAN
 4) JCPENNEY
 5) SPACE 830
 6) MACY'S
 7) OLD NAVY
 8) SEARS

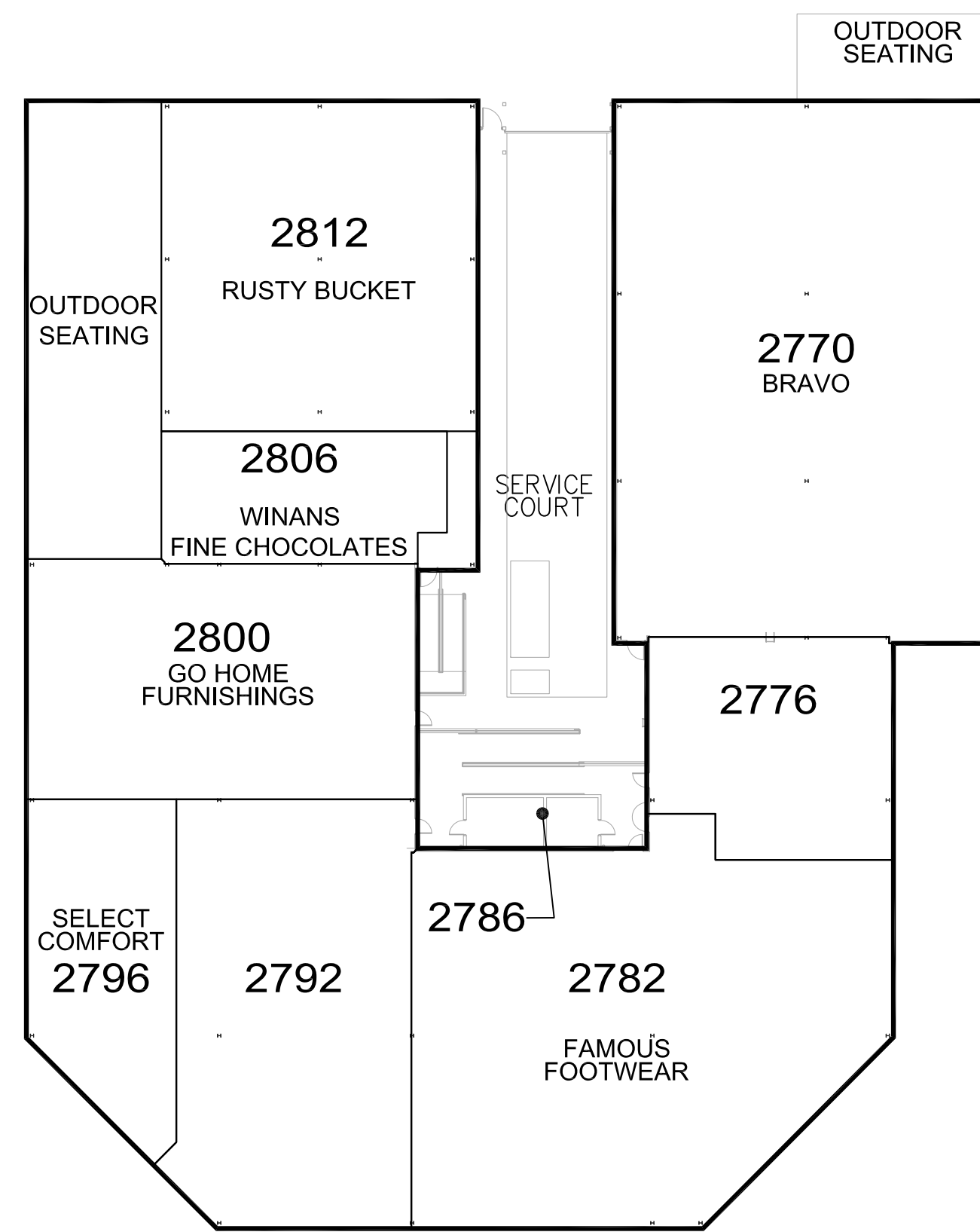
Out Parcel
 Total GLA:

WEB-MLP-10Q3
 1" = 60'-0"
 07.01.10
 1101

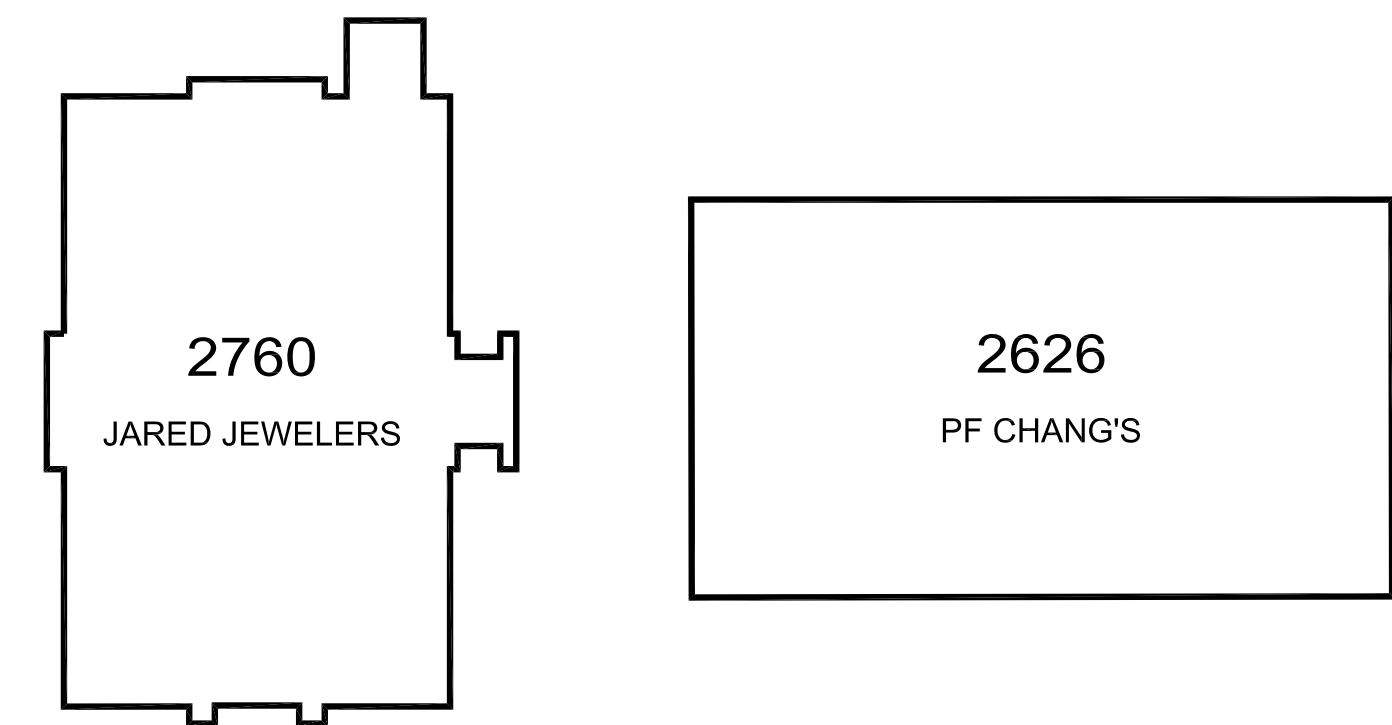
All of the tenant names which are indicated on this plan represent those leases which are executed, out for signature, in negotiation or proposed. All tenancies specified may not actually come into existence. All square footages and dimensions are approximate and subject to field verification.



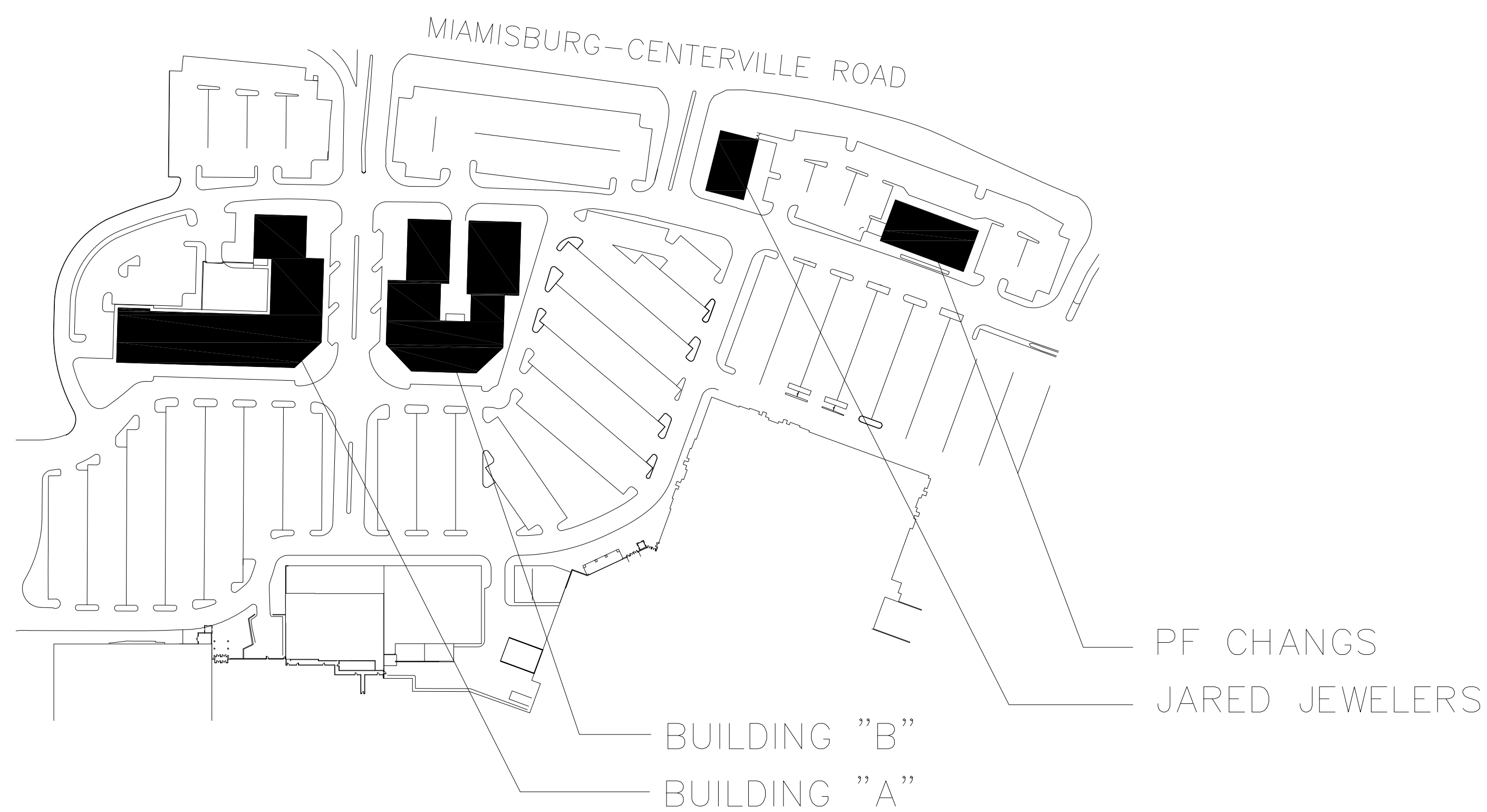
BUILDING "A"



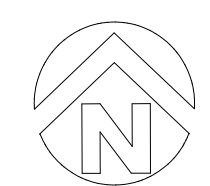
BUILDING "B"



OUTPARCELS



KEY PLAN:



All of the tenant names which are indicated on this plan represent those leases which are executed, out for signature, in negotiation or proposed. All tenancies specified may not actually come into existence. All square footages and dimensions are approximate and subject to field verification.

Dayton Mall
Dayton, Ohio

GIMCHER
DEVELOPMENT CORPORATION
GIMCHER PROPERTIES LIMITED PARTNERSHIP
180 East Broad Street, 21st Floor
Columbus, OH 43215
Phone: 614.621.9000
Fax: 614.621.9321

Revisions	
No.	Date
1	

WEB-MLP-10Q3

1" = 30'-0"
07.01.10